



Humber and North Yorkshire  
Health and Care Partnership



**NHS**  
York and Scarborough  
Teaching Hospitals  
NHS Foundation Trust



# CAT HUB

Children's Ambulatory  
Treatment Hub

## Information for clinicians

The Children's Ambulatory Treatment Hub is managed by a team of experienced professionals including a paediatric nurse, GP, Advanced Clinical Practitioner with remote support from a paediatric consultant.

The aim of the clinic is to ensure parents have the knowledge, skills and confidence to care for their child at home, while also identifying children that require the additional observation, oxygen supplementation and feeding support that the hospital can provide.

Please provide patients with a digital information leaflet about their condition and provide verbal safety netting advice about 'red flags'. Also send the parent CAT hub leaflet contains important location and contact information.

**Open:** Monday and Thursday 14.30-20.30

**Appt length:** 40 minutes (plus 1h observation time if needed)

**Location:** Askham Bar, York, YO24 1LW

**Booking line:** 01904 943 690 (Open Mon-Fri 9.00-20.30)



## Eligibility Criteria

- Respiratory illness and/or fever
- Presence of amber features on severity score
- Consultation (telephone or face-to-face) with a primary care practitioner (e.g. PA, ACP, GP), directed by 111 or YAS paramedic
- Age 3m up to 12th birthday



## Exclusion Criteria

- Presence of red features on severity score, emergency medical help should be sought
- Child has open access to the paediatric department
- Premature birth, under 32 weeks gestation and age less than 9 months
- Clinician thinks an overnight inpatient stay is likely
- Child or person accompanying the child tested positive for COVID 19 and still in isolation period
- Fever longer than 5 days



If you are unsure whether your patient would be suitable for CAT hub you can seek further advice from the on-call paediatric consultant on 07976 319 551.

# Amber Criteria



## Activity

- Altered response to social cues
- No smile
- Reduced activity



## Skin

- Normal skin colour
- Pallor reported by parent/carer
- Cool peripheries



## Respiratory

- Tachypnoea
  - <12m: 50-60bpm
  - 1-12y: 40-60bpm
- Moderate chest recessions
- May have nasal flaring
- O2 Sats: 92-94%
- Stridor if distressed with barking cough
- Decreased air entry with wheeze



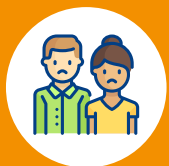
## Circulation

- Tachycardia
- 50-75% fluid intake over 3-4 feeds
- Cough induced vomiting
- Reduced urine output



## Fever

- $T \geq 38^{\circ}\text{C}$
- Rigors



## Parental concerns

# Red – High Risk



## Activity

- Not responding normally or no response to social cues
- Unable to rouse or if roused does not stay awake
- Weak, high pitched or continuous cry
- Appears ill



## Skin

- Pale, mottled, ashen
- Cold extremities
- CRT >3 secs
- Sunken eyes



## Respiratory

- Significant respiratory distress
- Grunting
- Apnoeas
- Severe recessions
- Nasal flaring
- All ages: RR >60bpm
- O2 Sats: ≤ 92%



## Peak flow

- PEF: <33% best or predicted



## Auscultation

- Silent chest



## Cough

- Stridor at rest with barking cough



## Circulation

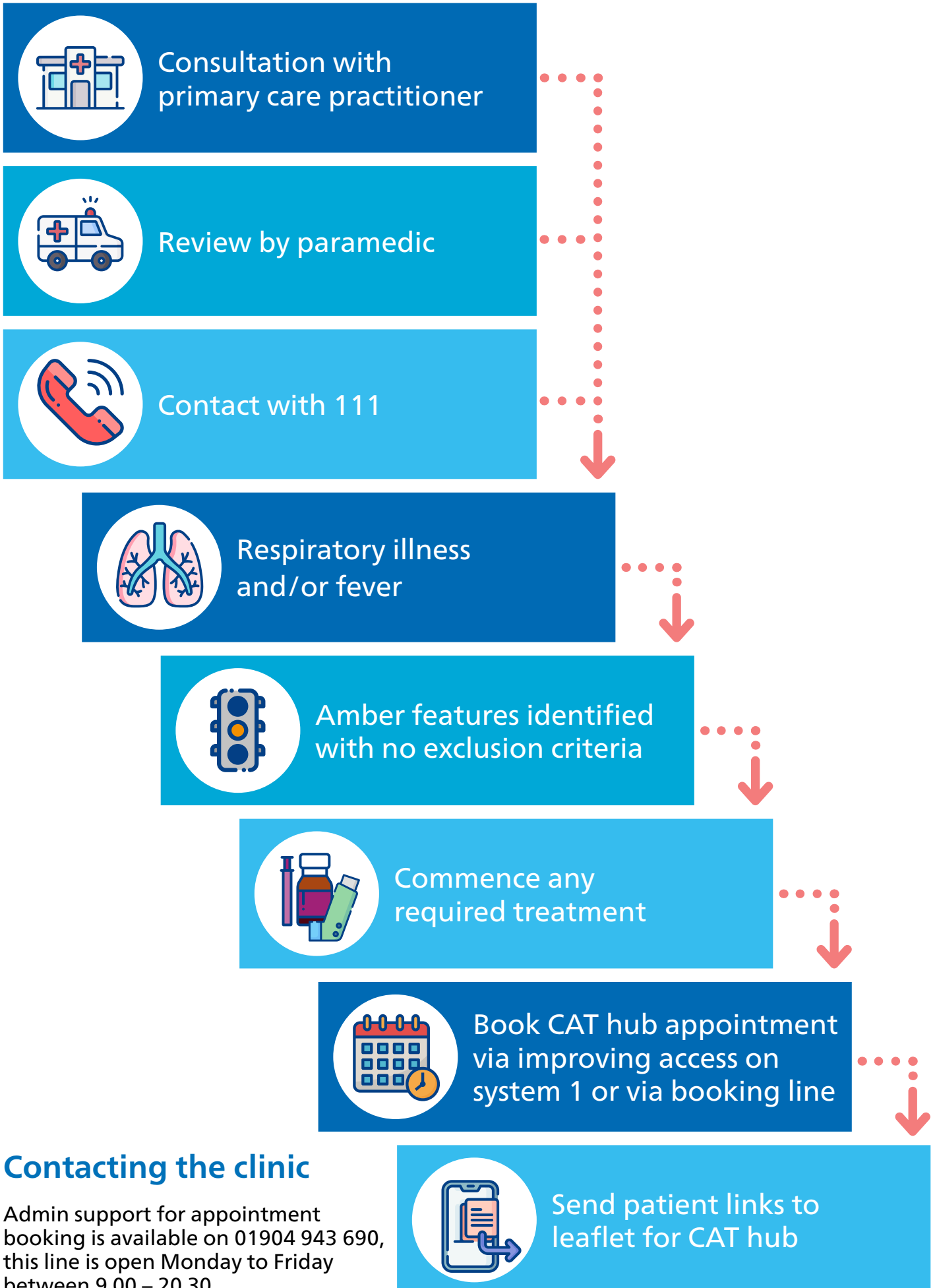
- 50-75% fluid intake over 3-4 feeds
- Cough induced vomiting
- Significantly reduced urine output



## Fever

- Age <3m: T ≥ 38°C
- Non-blanching rash
- Bulging fontanelle
- Neck stiffness
- Status epilepticus
- Focal neurological signs
- Focal seizures

# Booking into CAT hub



## Contacting the clinic

Admin support for appointment booking is available on 01904 943 690, this line is open Monday to Friday between 9.00 – 20.30

# What will happen at the clinic

